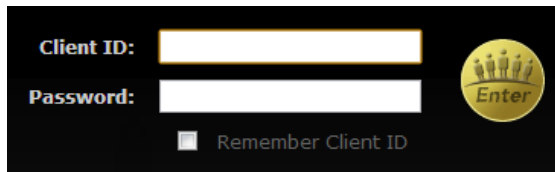


Logging In to MyChiroTouch

To launch MyChiroTouch.com, open your web browser and type www.mychirotouch.com into the address bar. Log in to MyChiroTouch by typing your client ID and password.



A login form with a black background. It features two white input fields: the top one is labeled "Client ID:" and the bottom one is labeled "Password:". Below the password field is a checkbox labeled "Remember Client ID". To the right of the input fields is a yellow circular button with a crown icon and the word "Enter" below it.

- a. Your client ID is a four-number code preceded by up to four letters. If you do not know your client ID, open ChiroTouch Front Desk or the CT Launcher. Your client ID appears in the upper left corner of these screens.

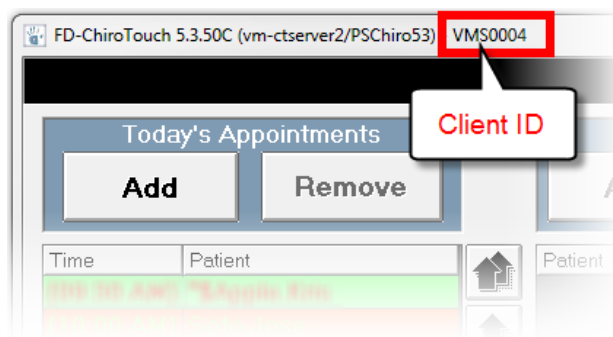


Figure 1.1 ChiroTouch Front Desk

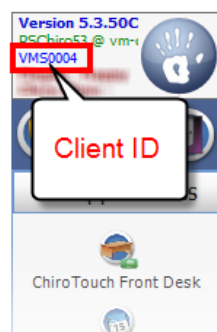


Figure 1.2 CT Launcher

- b. Your password is included in the welcome email you received after purchasing ChiroTouch. You can change this password after you log in to MyChiroTouch for the first time.

MyChiroTouch is a constantly updating resource, so be sure to check back frequently for new additions!